

## Summary of Catch up support Autumn Term 2021

### Description

*Catch up funding has been allocated to schools on a per pupil basis. Schools should use this funding for specific activities to support their pupils' education recovery in line with the curriculum expectations.*

*Schools can use their funding in a way that suits their cohort and circumstances. They are expected to use this funding for specific activities which will help pupils catch up on missed learning. Schools should particularly focus on disadvantaged and vulnerable pupils as we know they have been most affected.*

### LEAP Approach

At LEAP, we will follow three main areas in our approach to supporting children:

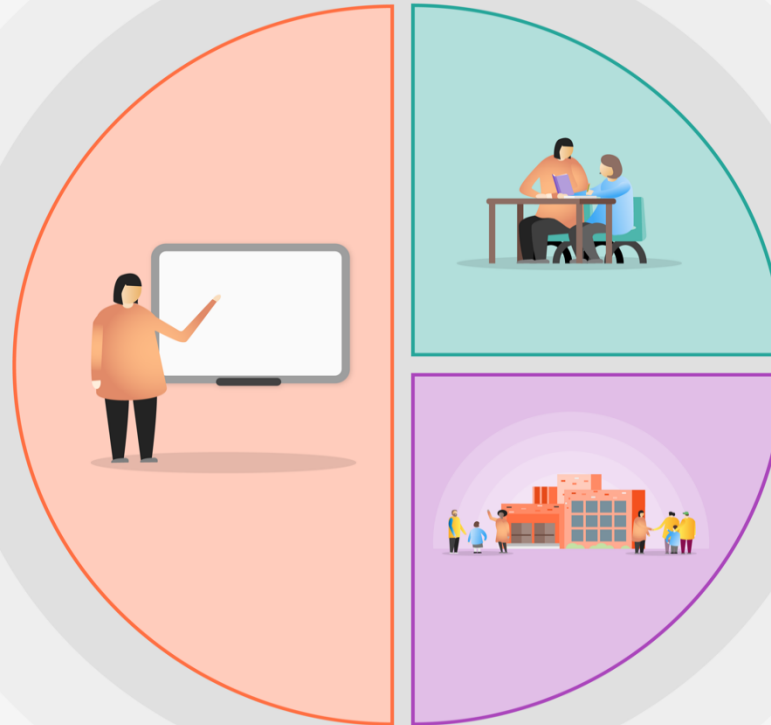
1. High-quality teaching
2. Targeted academic support
3. Wider strategies

### Allocation of Funding

	Total	2020 - 21	2021 – 22
Mandeville	£18,800	£10,970	£7830

## 1 Teaching

- Quality First Teaching
- A broad and engaging curriculum
- Formative Assessment to inform planning and teaching
- Systematic approach to the teaching of Reading
- Wide opportunity for Writing
- Reasoning and application approach to embedding the key skills in Maths
- Evidence of the quality teaching of key skills across the curriculum



## 2 Targeted academic support

- Same- day in class intervention
- Teacher- led targeted group support
- Intervention programmes led by Teacher and Teaching Assistants

## 3 Wider strategies

- Extended school provision: Breakfast Clubs and sport after school
- Pastoral support: Learning Mentor intervention
- Attendance support
- Staff well-being committee

**Support: Mandeville**

Focus		Description	Year groups	No. of children	Additional resource
Targeted academic support	Reading	DSR and Phonics support 1:1 Reading support Peer Reading Ready, Stead, Read group (+families) 1:1 Reading Comprehension Focus Reading Groups in class After school reading groups Academic mentor support for reading – x2 hours (booster sessions before & after school)	R- Y3 Y1 – Y3 Y2,5,6 Y3,4,5,6 Y5 Y3 – Y6 Y5 Y4,5,6	116 9 2 138 15 60 7 70	CTs, Tas, S&L Therapist, HT, HLTA, LM
	Writing	Academic Mentor Writing Groups Targeted Handwriting Groups Targeted writing Tutorials Now Press Play targeted groups	R – Y5 Y1 – Y4 Y5 Y3,4,5,6	62 6 7 138	CT, TA, English Lead,
	Maths	Additional Groups 1:1 Maths After school Maths tutoring Targeted teaching Academic mentor support for reading – x2 hours (booster sessions before & after school)	R – Y5 Y3 Y5 Y5 Y4,5,6	37 1 24 8 70	CT, TA, LM, Additional CT
Wider strategies	Physical	Daily Mile 1:1 Movement breaks After school activity clubs PE specialist leading sessions in playcentre Gymnastics Swimming Cycling	R Y1- Y6 Y3  Y1-Y6 Y3-Y6 Y3-Y6	24 All  184 138 138	CT, TA

	Well-being	Attention and Social Skills Groups	R and Y1	26	S&L Therapist, TA
		Speech and Language support	R and Y6	25	
		Social group: Gardening	Y1	5	
		Managing Emotions Group	Y2-Y6	16	
		Cookery Lessons	R Y6	TBC	
		Forest School	EYFS	105	
		Emotional Literacy support assistant	Y3-Y6	6	
		School band	Y5 -Y6	20	
		Kids Network Mentoring	Y5&6	9	
		Girls Group	Y5	6	
		Eco Active	Y6	TBC	
		Transition Groups	Y6	36	
		Fundraising Project	Y6	47	
		Circle of friends	Y5	6	
		WAMHS (wellbeing and mental health in schools) project	Whole school		
		NELI	EYFS	8	
		Breakfast clubs	Y1-Y6	TBC	
		School council	R-Y6	16	
		Junior leadership teams	Y3,4,5,6	5	
		Subject ambassadors	Y3,4,5,6	16	
Mental Health Ambassadors	Whole school	TBC			